

JACK UP LEG STRAIGHTNESS CHECK AND ALIGNMENT



Scope of works

1. Jigs for leg sections manufacturing dimensional check
2. Leg section straightness check.
3. Leg sections alignment before welding, post welding check.
4. Leg straightness check of already installed legs.
5. Leg leveling as per required datum (main deck or gravity).
6. Jacking housing straightness check.

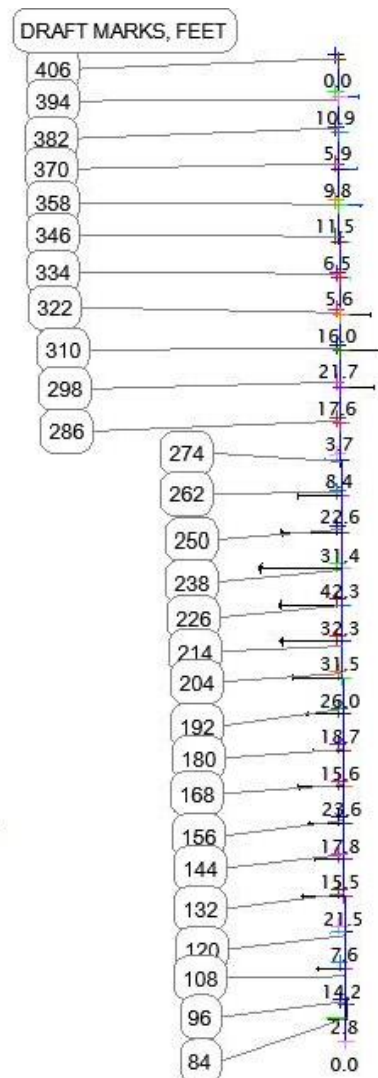
Advantages of Total Station TDRA 6000 alignment:

1. Accuracy of measurements (up to 0.2mm) is maintained over big distances (up to 600m).

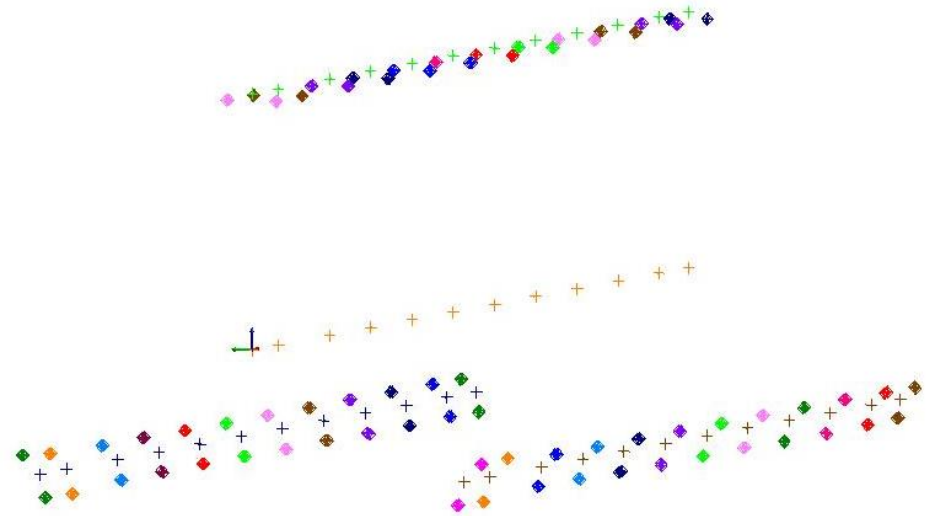
2. Software integration due to multi station functionality allows you to tight up all object (virtually not visible from one position) in one 3D image which allows you to acquire any relative dimension/position in space
3. Time savings: fast instrument installation, measurement acquisition and results reporting.

Examples:

1. Oil rig legs straightness check: leg straightness deviation at every draft mark.



2. Leg sections alignment and straightness check: complete 3D image of leg allows you to retrieve any relative dimensions between the features, such as angles and distance between cores, etc.



3. Jacking housing straightness check: straightness is analyzed based on each section center deviation from average jacking structure axis. Sampling was done every half meter.

